

A small, dark-colored boat with an outboard motor is stranded on a vast, flat, and dry lake bed. The ground is a mix of sand and dark, wet patches, suggesting a recent recession of water. The horizon is low and flat, and the sky is filled with heavy, grey, overcast clouds, creating a somber and desolate atmosphere.

Is China 5th Largest Lake to Dry-Up?

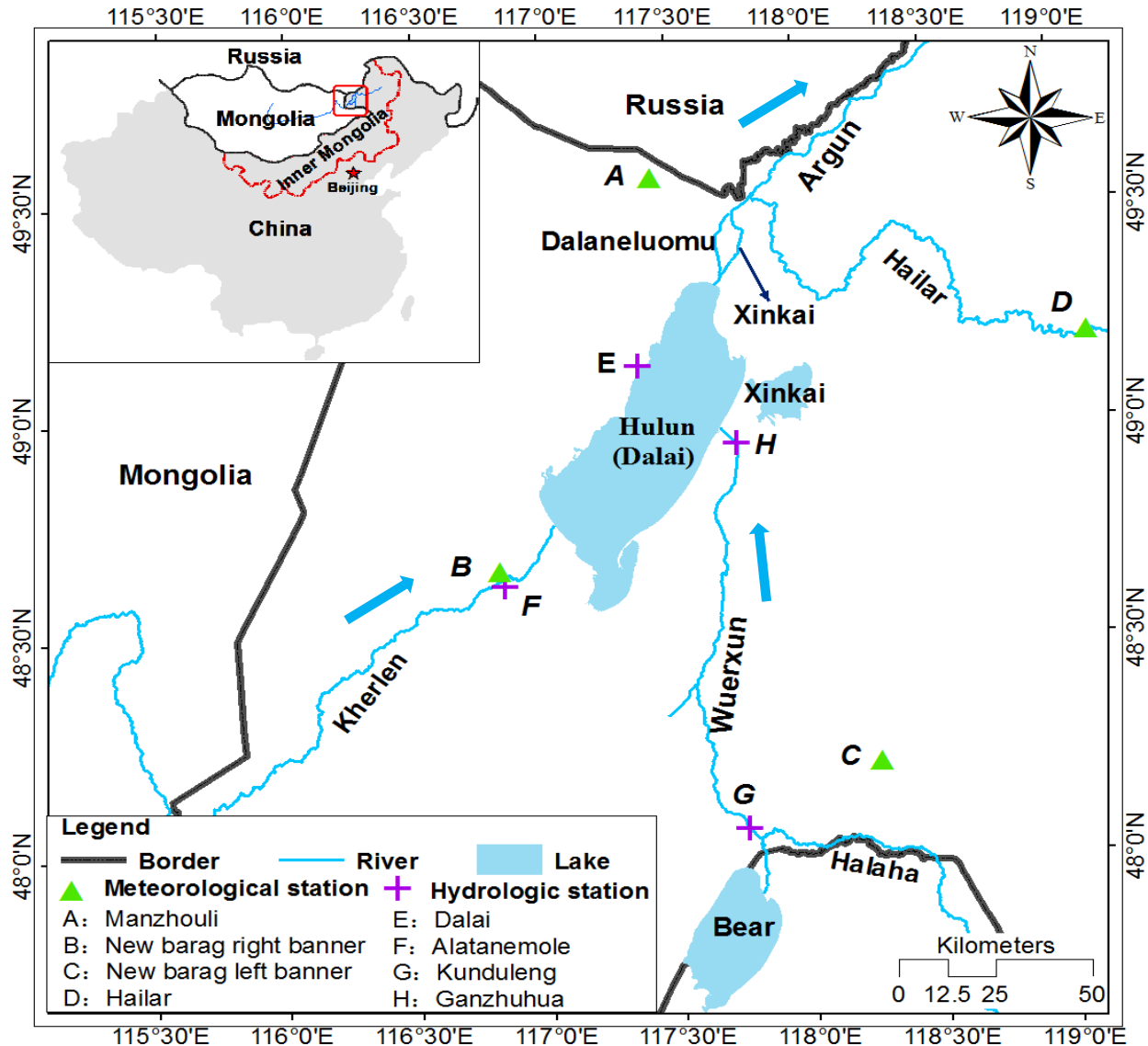
Zuansi Cai

Edinburgh Napier University

Acknowledgments

- Taoyong Jin & Jiancheng Li, Wuhan University
- Changyou Li & Sheng Zhang, Inner Mongolia Agricultural University
- Aizhong Ding, *Beijing Normal University*
- Ulrich Ofterdinger, Queen's University Belfast
- *Former PhD student Zhejie Wang, IMAU*

Hulun Lake



Problems Over Last Decade



1990s vs. 2010

- A: 2300; <1800 km²
(>25%)
- V: 14; ~5 bn m³
(>60%)
- D: ~6-7; ~2-3 m
(-4 m)
- Q_{in}: 1.4; 0.3bn m³/y
(>80%)



這張照片就是1997年的7月份我來拍的



那麼這個水位已經下降了4到5米

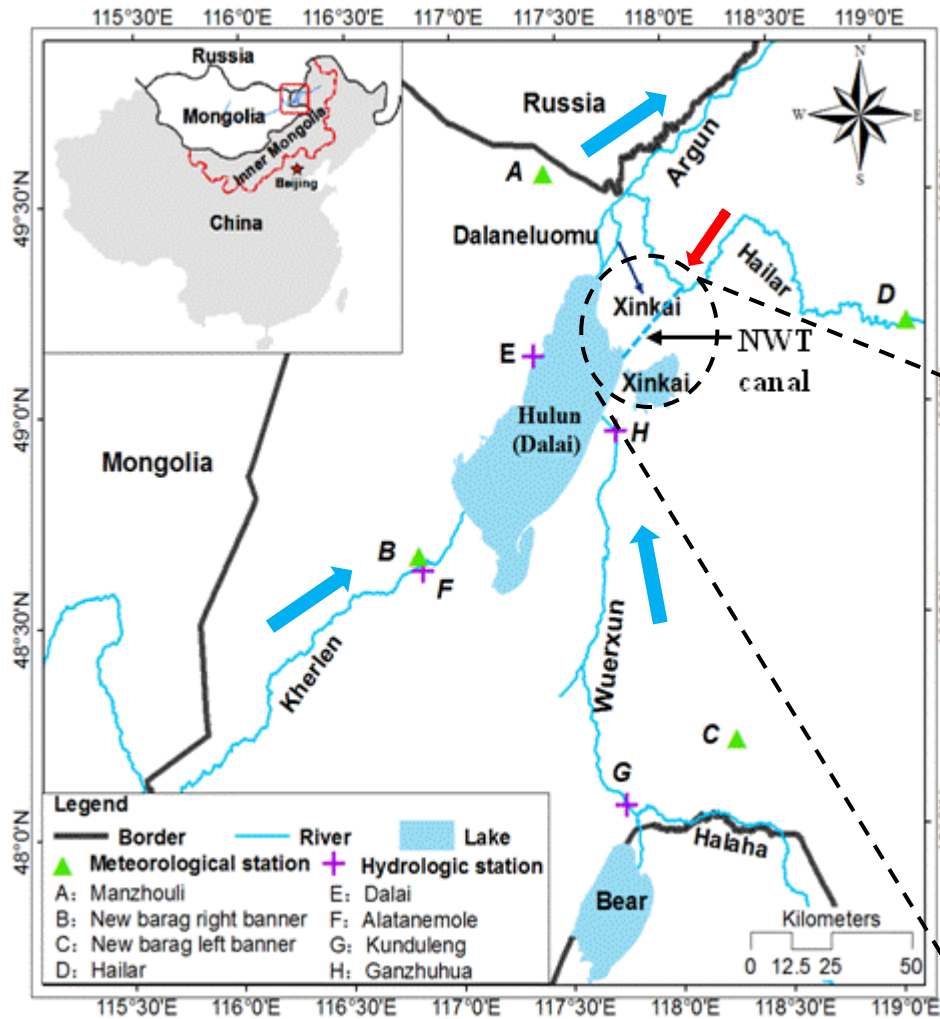




**A National Nature Reserve &
A list of International Important Wetland**

Water Transfer Project

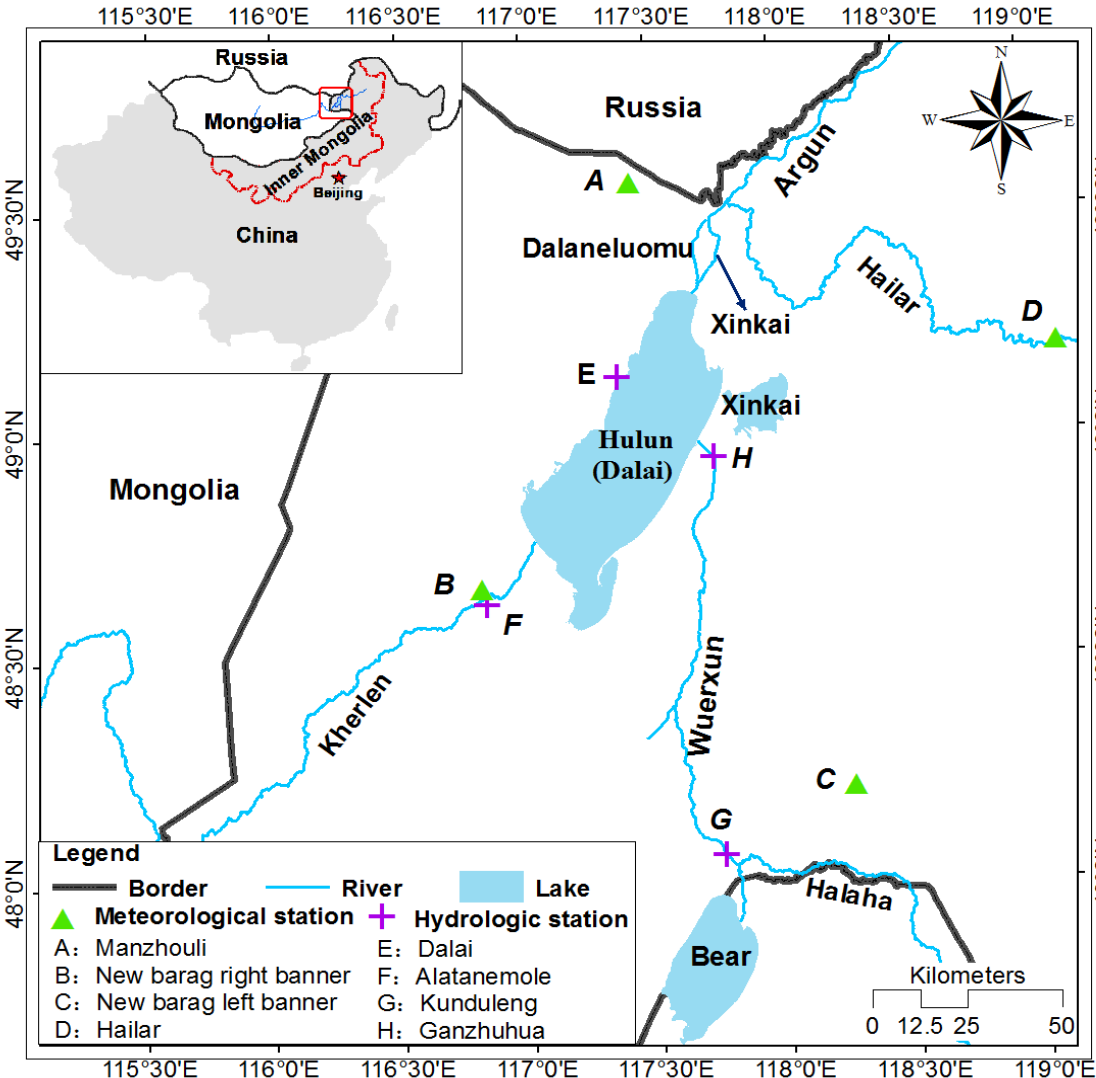
- Multi-million US dollar water transfer project started from 2007.



Objectives

- To identify key drivers for falling water level
 - No major settlement around the lake
- To develop a modelling tool to manage lake water resources
 - For example, management of water account transferring from Hailar river

Data Collection



Hydro. station:

- River discharge
- Rain fall
- Evaporation
- Temperature
- Lake level (to 1980)

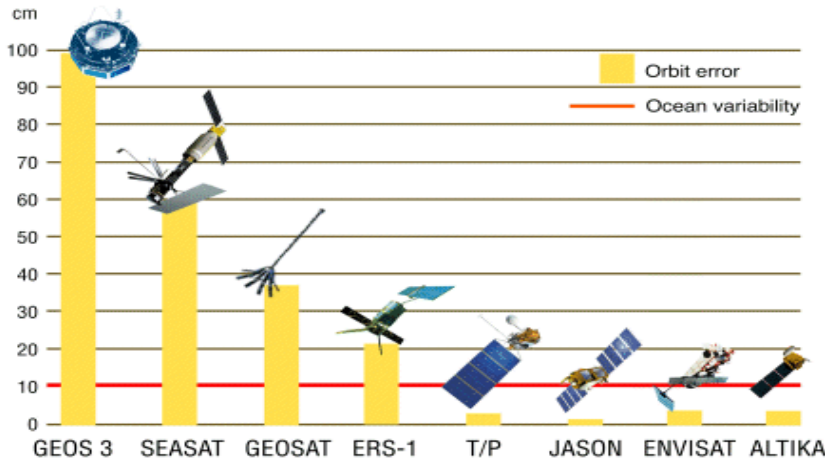
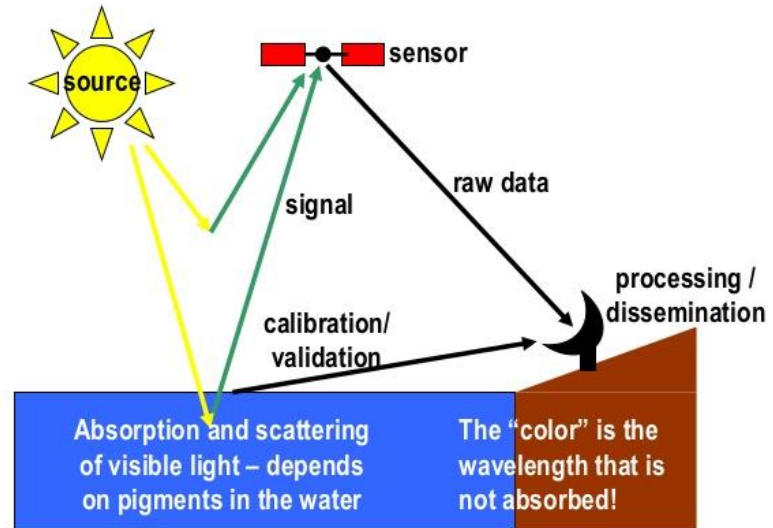
Meteor. station

- Rain fall
- Temperature
- Sunshine
- Humidity

Satellite Altimetry

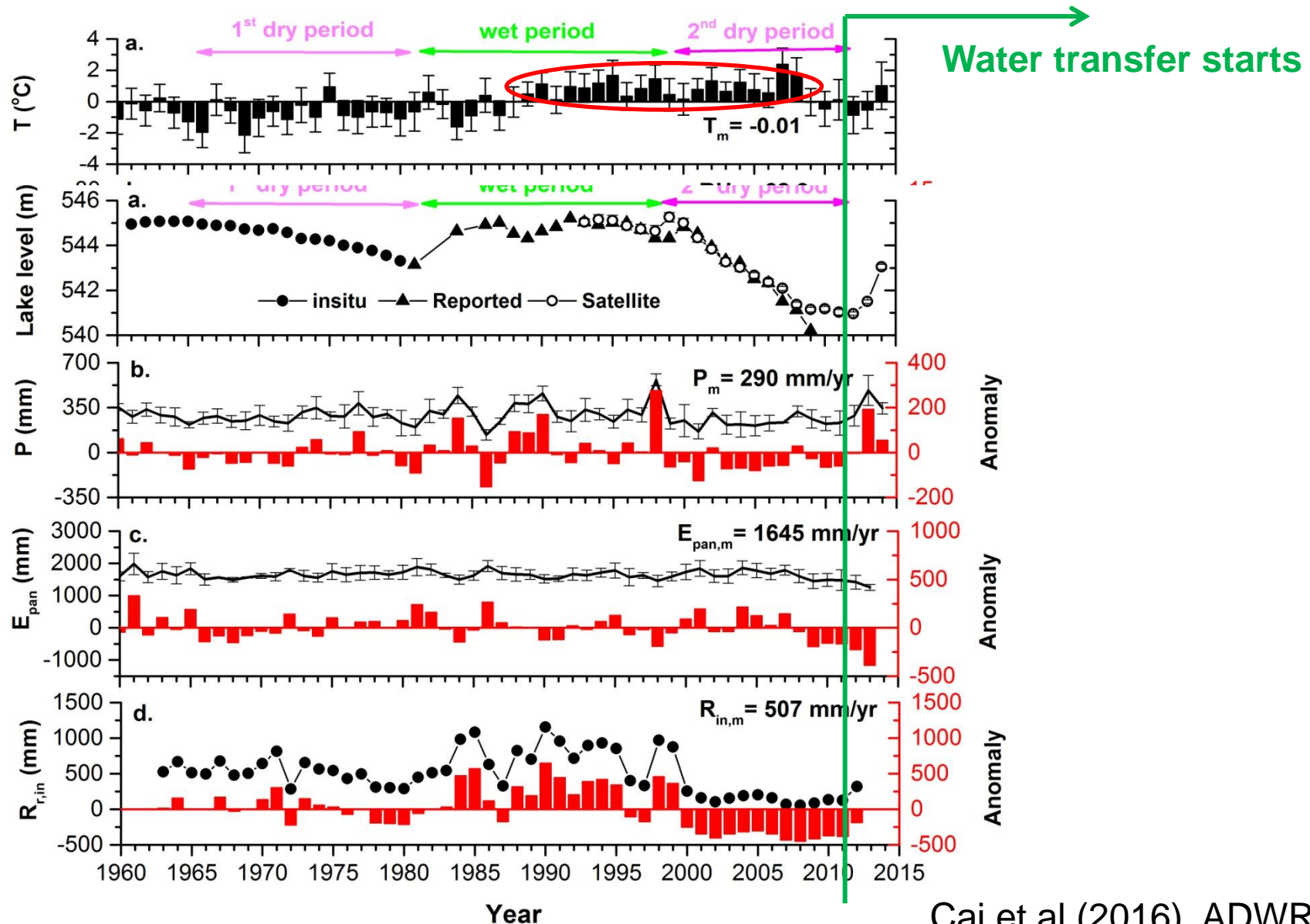


Components of a passive “ocean color” remote sensing system
Using Visible wavelengths



To reconstruct the lake water level after discontinuing ground-based measurements from 1980s

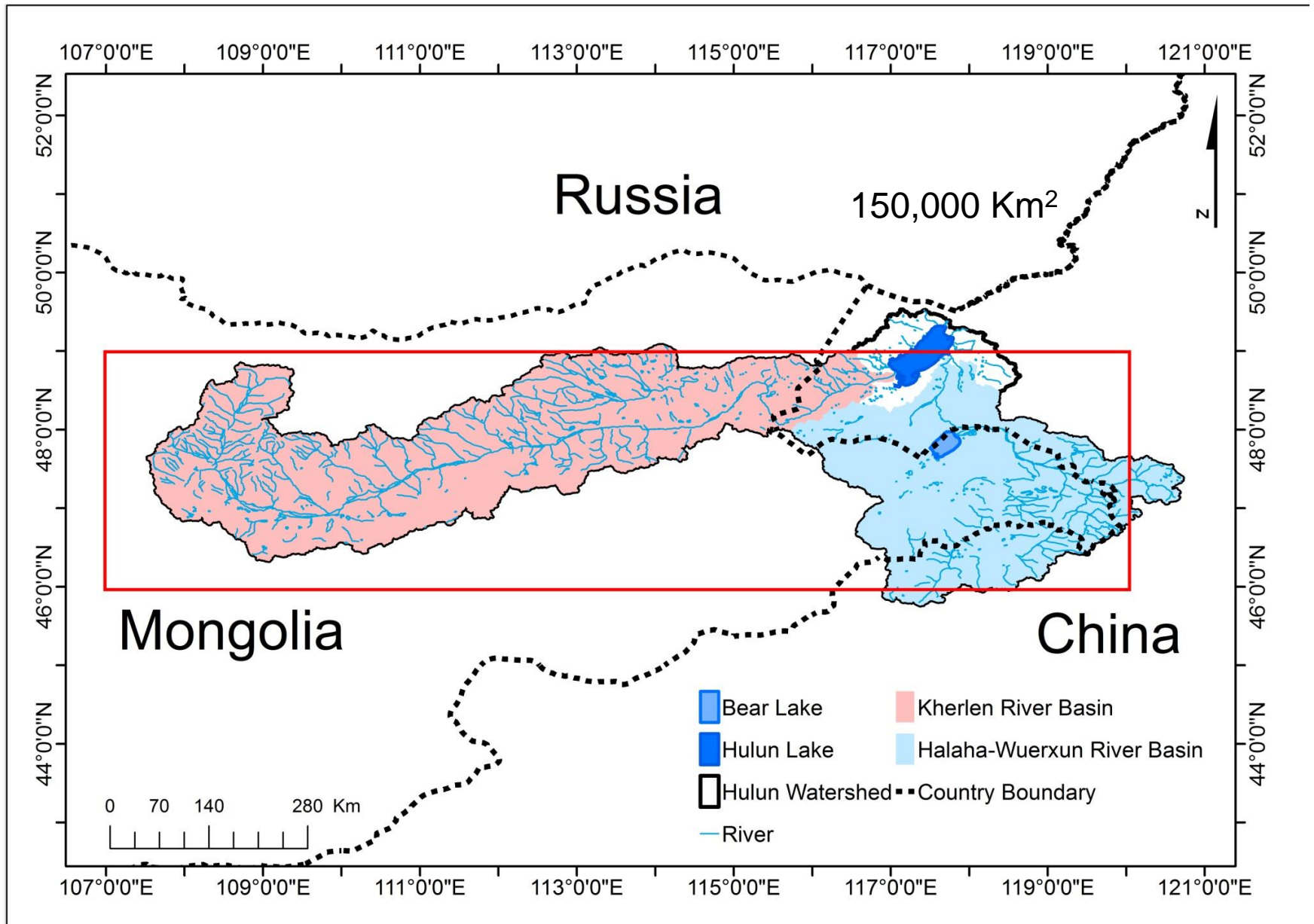
Five-Decade Data



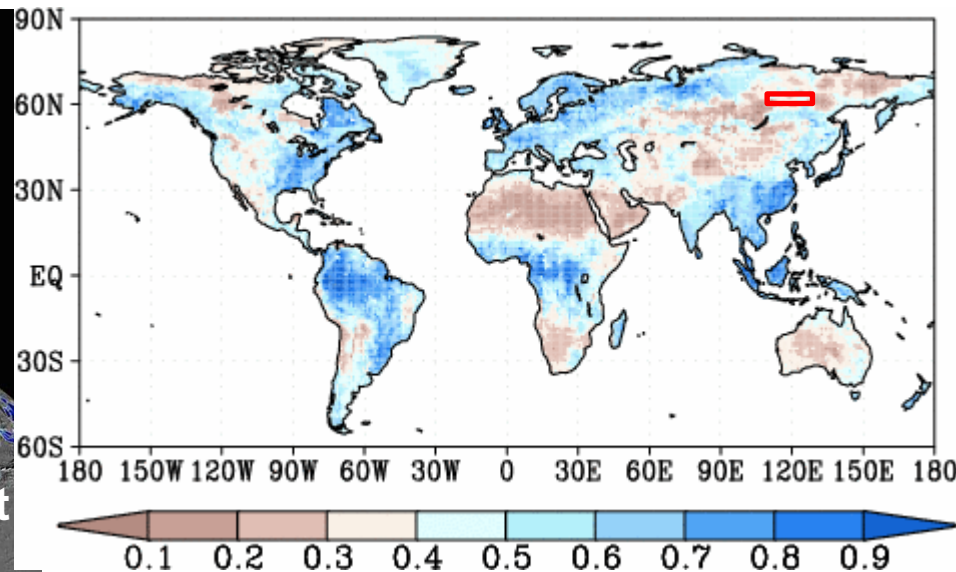
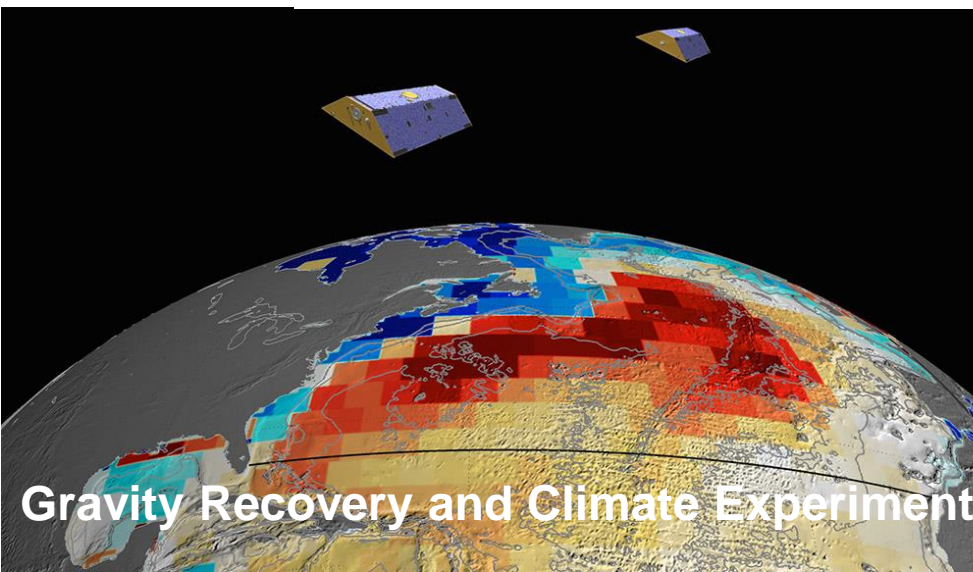
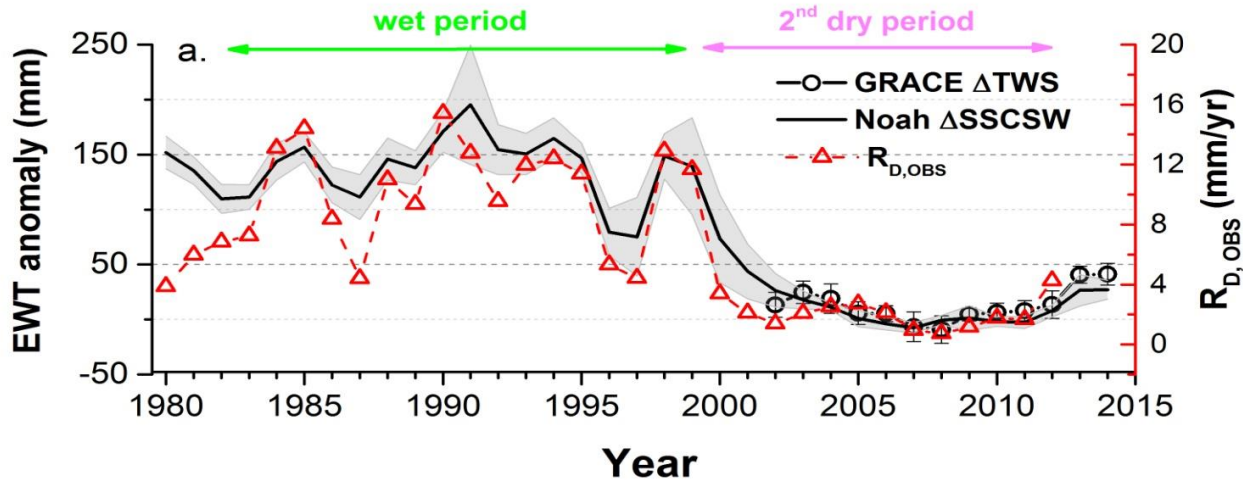
Key Drivers?

		Δh_a	P_a	E_a	$R_{d,a}$
Correction coefficient	Δh_a	1			
	P_a	0.34	1		
	E_a	-0.13	-0.18	1	
	$R_{s,a}$	0.57	0.26	0.01	1

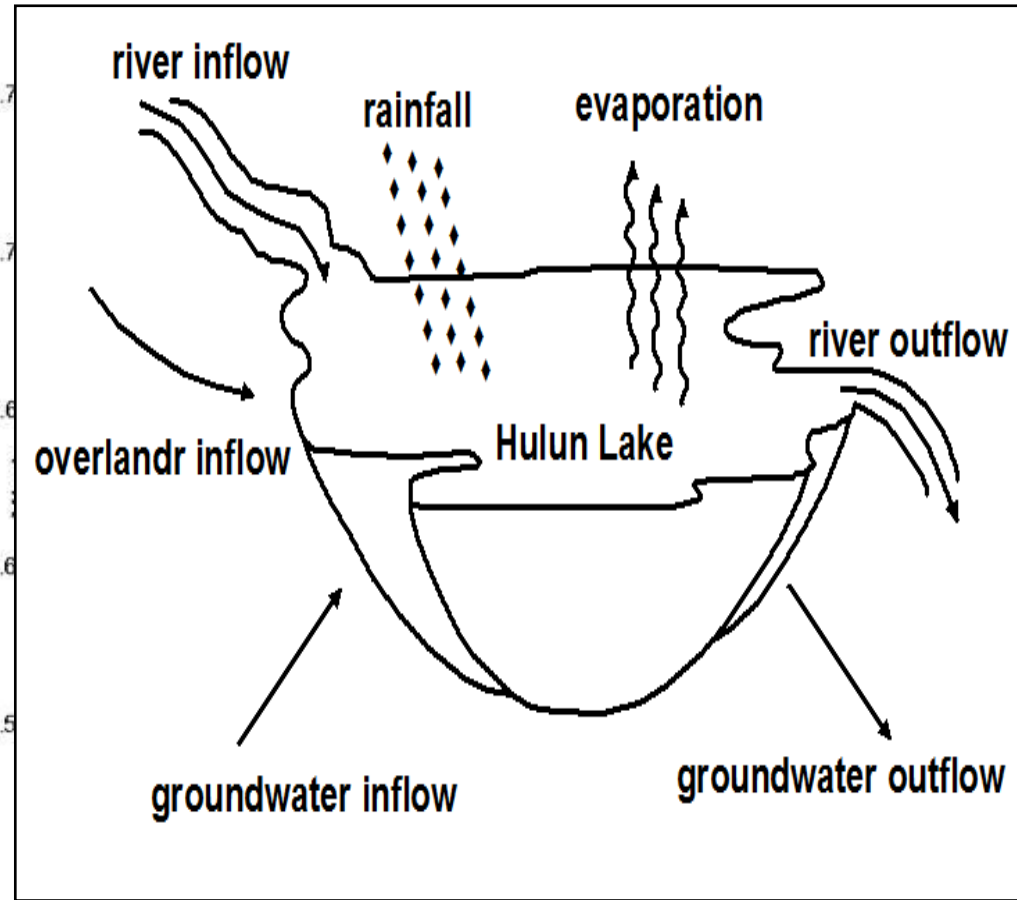
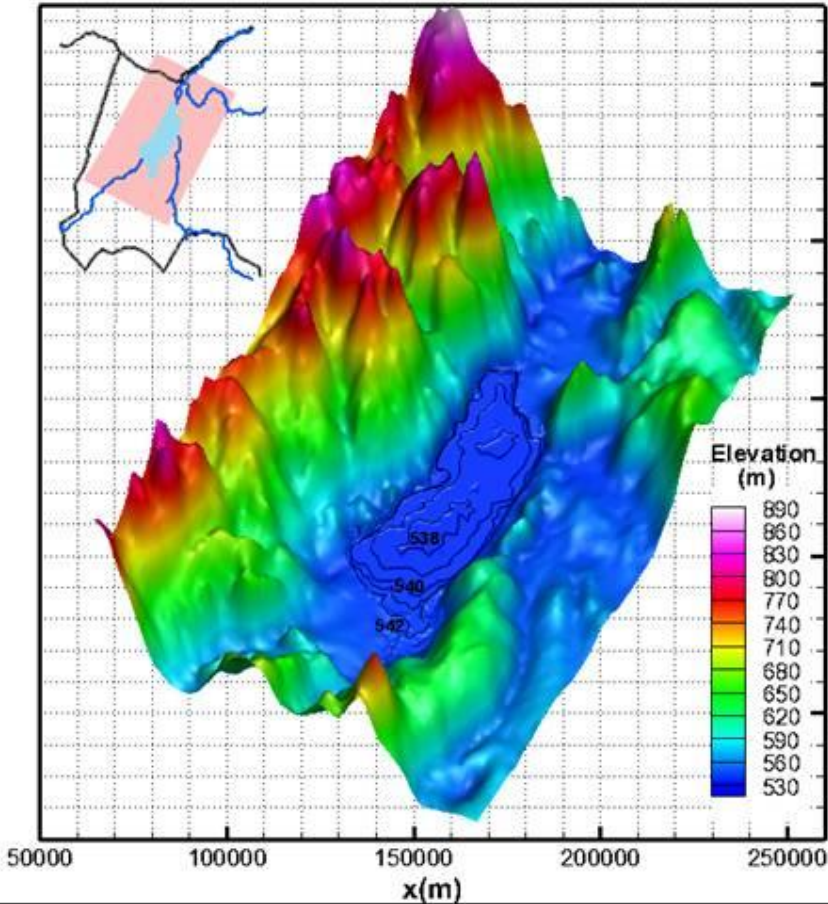
Lake Water Basin



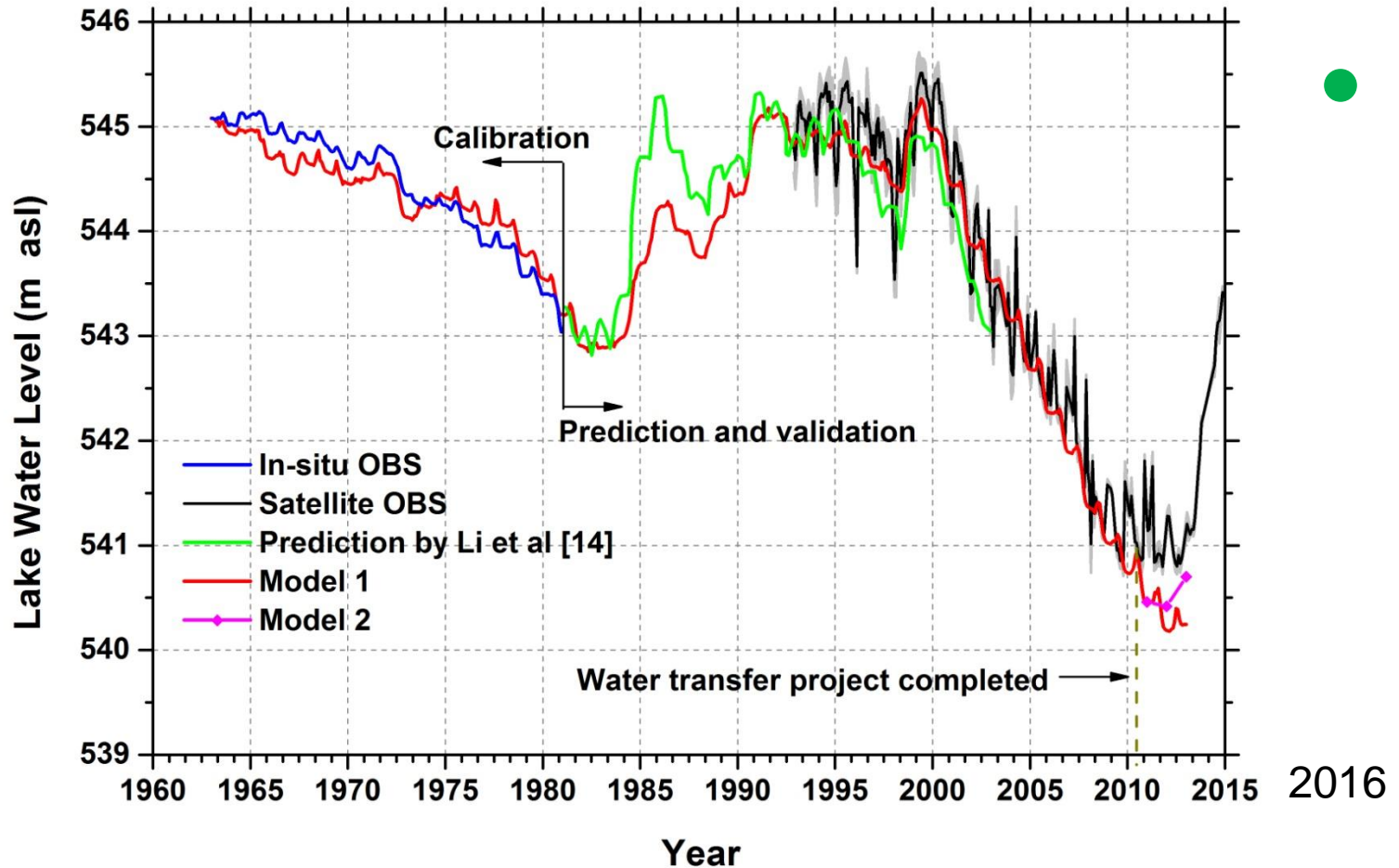
GRACE & Global Land Surface Modelling



Water Balance Approach



Lake Level Predictions



Conclusions

- The reduction of river discharge was the key factor for the lake water decline between 2000 and 2010
- The reduction of river discharge due to depletion of soil moisture with watershed
- The lake water balance model can provide useful tool to manage lake water resources



Eutrophication of lake water

Lake Water Quality

- No outflow from the lake for 15 years
- Poor water quality of Hailar River via water transfer project
- On-going water quality research

